



# ezAlert Kit

## Wireless Security Solution Kit

A total solution for your smart home security.

### What's inside the ezAlert kit

- ezAlert
- ezSensor Move Pro
- ezAlert Remote
- ezSensor PIR



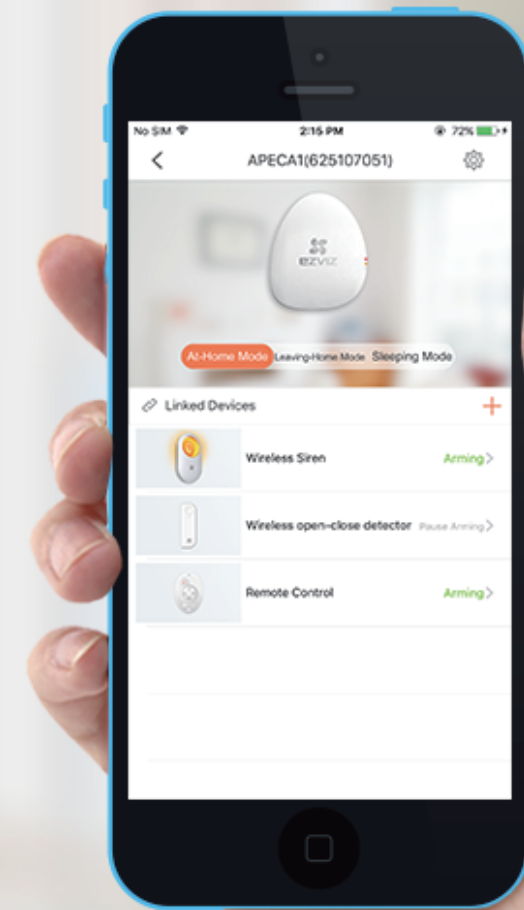
# Optimal protection

A comprehensive wire-less security kit delivers an optimal protection.



# Easy to install

We've pre-paired the ezSensor Move Pro, the ezAlert Remote and the ezSensor PIR with the ezAlert for you. All you have to do is scan the QR code on the ezAlert, follow the voice guidance, and you are good to go!



## The ezAlert, heart of your security

---

The ezAlert is a wireless security hub connected to Wi-Fi and up to 32 sensors.



## The ezSensor Move Pro, a maximum security

---

Triggered when a door or window is opened or moved at an angle greater than 3°.



## The ezAlert Remote, choose the right scenario mode better fit you

---

A lightweight and portable remote control allows you to choose scenario modes better fit you.



## The ezSensor PIR, detects infrared wavelengths

---

The ezSensor PIR has a wide viewing angle of 100°,  
which disregards movement by pets up to 25kg.



wide viewing angle of 100°

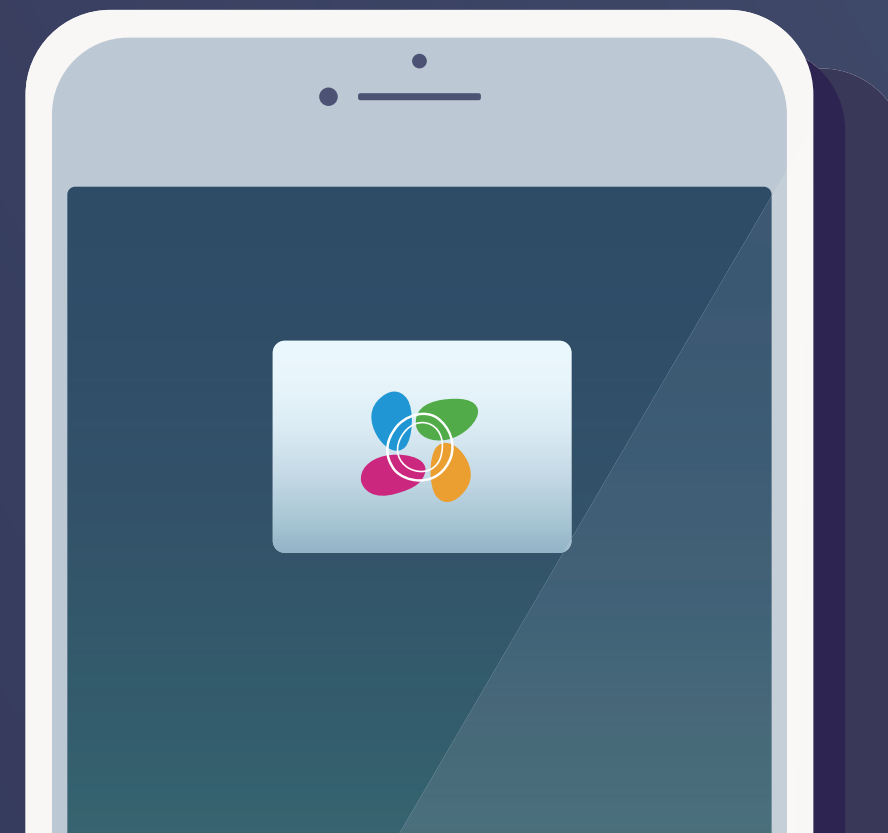


Up to 25kg

## Instant alerts

---

Whenever a sensor in the ezAlert kit is triggered,  
the ezAlert sends an instant alert to the app on your smart phone.



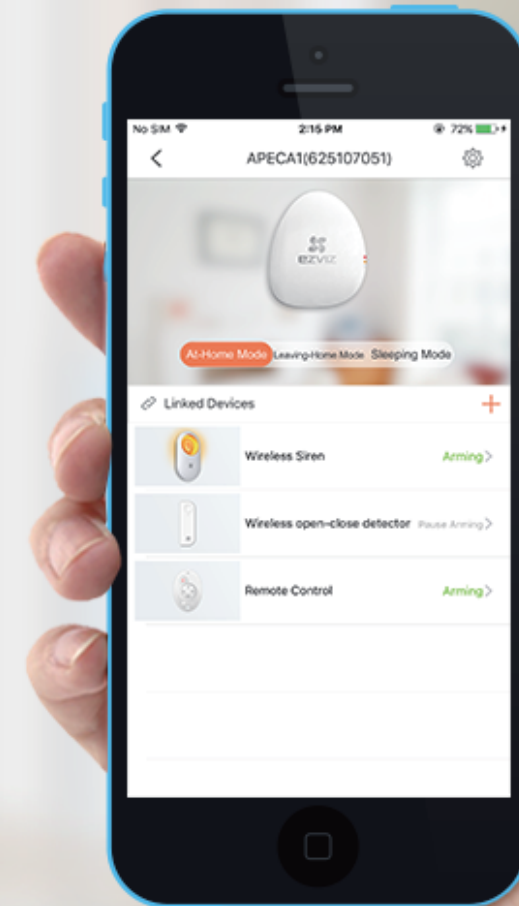
## Integrated solution

The ezAlert can be connected to your EZVIZ cameras. When a sensor in the ezAlert kit is triggered, the cameras instantly starts recording images and video.



## Control via the EZVIZ App

With the EZVIZ App, you can remotely control all the devices connect to it even when you are away from home.



# Package Contents:

- ezAlert x 1
- ezSensor Move Pro x 1
- ezAlert Remote x 1
- ezSensor PIR x 1

Specifications are subject to change without notice. EZVIZ is a registered trademark of Hangzhou EZVIZ Network Co., Ltd.  
Other brands and product names are trademarks or registered trademarks of their respective holders.

<https://www.ezvizlife.com/>